



21 Green Close, Mayals, Swansea, City & County Of Swansea, SA3 5DN

£300,000

Nestled within the highly desirable locale of Green Close, Mayals, this immaculate four-bedroom terraced house presents an exceptional opportunity for comfortable and convenient living. Situated in a cul-de-sac location, this property boasts a generous floor area spanning approximately 1231 square feet, providing ample space for various lifestyle needs. Offered for sale with no onward chain.

Upon entering, you are greeted by a welcoming hallway that sets the tone for the rest of the home. The ground floor encompasses a practical cloakroom, an integral garage (with potential for conversion, subject to necessary permissions) offering convenient storage or parking options, and a contemporary kitchen/breakfast room. This well-appointed kitchen provides the ideal space for culinary enthusiasts to create and entertain, with ample room for dining.

Entrance

Via a composite door into the hallway.

Hallway



With stairs to the first floor. Door to the cloakroom. Door to the integral garage. Door to the kitchen/breakfast room. Radiator. Tiled floor.

Cloakroom 5'3" x 2'5" (1.616 x 0.762)

With a frosted double glazed window to the front. Low level w/c. Corner wash hand basin.

Integral Garage 16'6" x 8'4" (5.050 x 2.545)

With an 'up & over' door. Power and light. Plumbing for washing machine. Space for tumble dryer.

Kitchen/Breakfast Room 11'0" x 16'3" (3.372 x 4.965)



With a set of double glazed French patio doors to the rear. Double glazed window to the rear. Double glazed

PVC door to the rear. Well appointed kitchen fitted with a range of base and wall units, running work surface incorporating a stainless steel sink and drainer unit. Space for cooker. Space for American style fridge/freezer. Opening to the pantry. Tiled floor. Radiator.

Kitchen/Breakfast Room



Kitchen/Breakfast Room



Kitchen/Breakfast Room



Lounge



First Floor

Landing

With a door to the lounge. Door to the bathroom. Door to bedroom four. Radiator. Stairs to the second floor.

Lounge 9'0" x 16'3" (2.762 x 4.962)



With a set of double glazed windows to the front. Radiator.

Bathroom 5'6" x 8'10" (1.688 x 2.707)



With a set of frosted double glazed windows to the rear. Well appointed suite comprising; free standing bathtub. Corner shower cubicle. Low level w/c. Wash hand basin. Chrome heated towel rail. Tiled floor.

Bathroom



Bedroom Four 7'11" x 7'10" (2.426 x 2.398)



With a double glazed window to the rear. Radiator. Doors to built in wardrobe.

Second Floor

Landing

With doors to bedrooms one, two and three. Loft access.

Bedroom One 16'2" x 8'0" (4.950 x 2.441)



With a set of double glazed windows to the rear. Radiator. Sliding door to built in wardrobe.

Bedroom Two 13'10" x 8'2" (4.223 x 2.50)



With a set of double glazed windows to the front. Radiator.

Bedroom Three 9'3" x 7'9" (2.844 x 2.375)



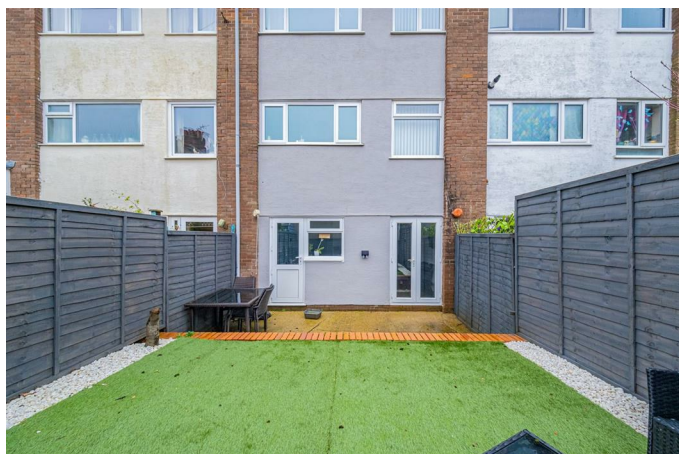
With a set of double glazed windows to the front. Radiator.

External

Front

You have private parking for one vehicle leading to the integral garage.

Rear



You have a seating area leading up to a further raised seating area.

Rear



Aerial



Aerial



Services

Mains electric. Mains sewerage. Mains water. Mains Gas. Broadband type - ultrafast fibre. Mobile phone coverage available with EE, Three, O2 & Vodafone.

Council Tax Band

Council Tax Band - E

Tenure

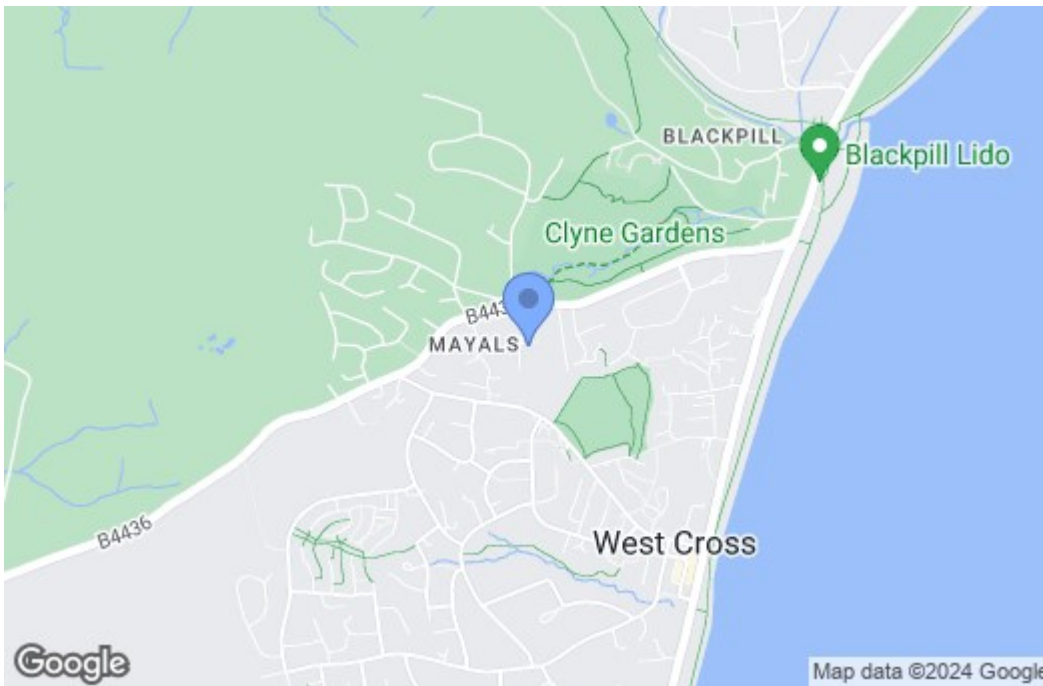
Freehold.

Floor Plan

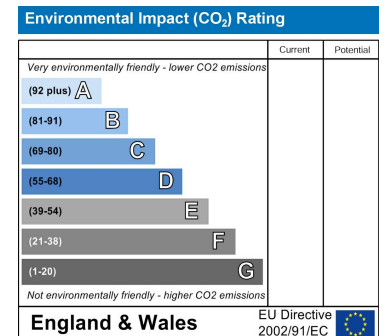
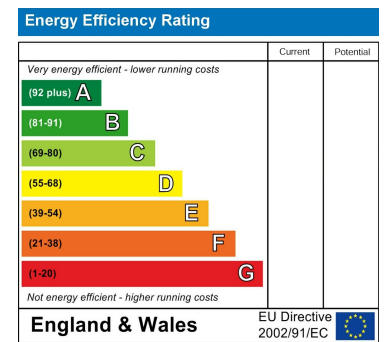


For further information, please contact the RICS Chartered Surveyor, Mr. [Name], at [Address], [City], [County], [Postcode].

Area Map



Energy Efficiency Graph



These particulars, whilst believed to be accurate are set out as a general outline only for guidance and do not constitute any part of an offer or contract. Intending purchasers should not rely on them as statements of representation of fact, but must satisfy themselves by inspection or otherwise as to their accuracy. No person in this firm's employment has the authority to make or give any representation or warranty in respect of the property.